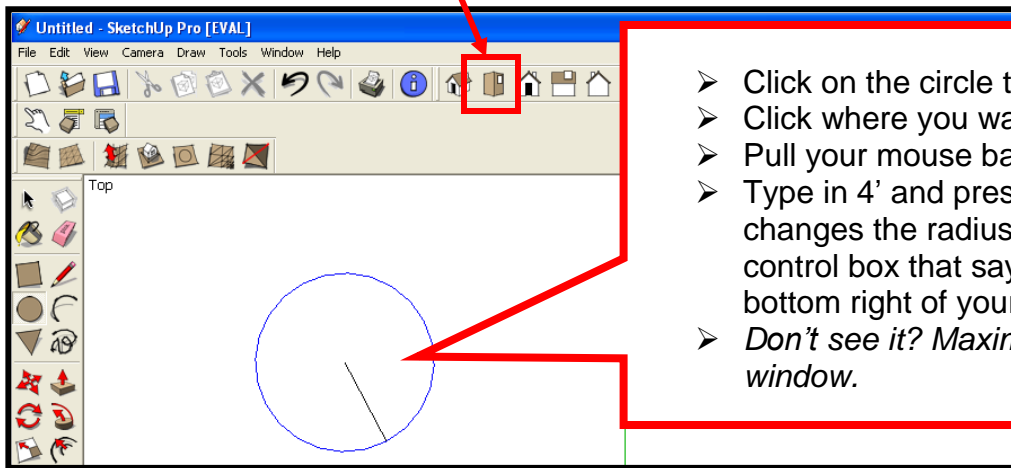



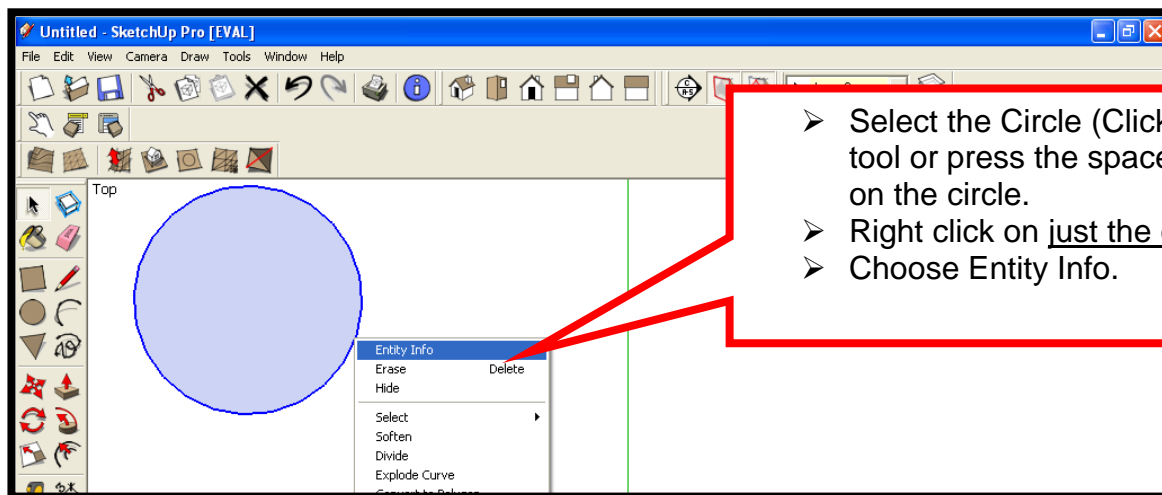
## Radius and Circumference of a circle

Plan View – top view selected

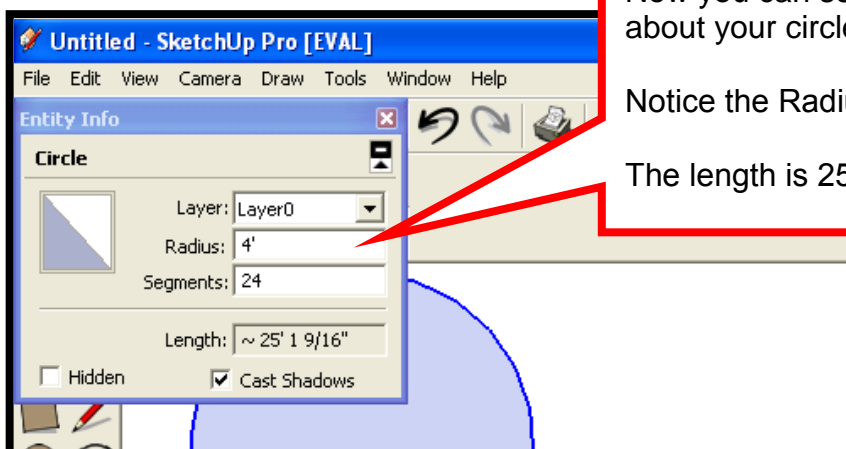


- Click on the circle tool. 
- Click where you want the center to be.
- Pull your mouse back and let go.
- Type in 4' and press enter. Notice it changes the radius to 4 in the value control box that says radius on the bottom right of your screen.
- *Don't see it? Maximize sketch up window.*

➤ You can also change the size (radius) after you click away if you:



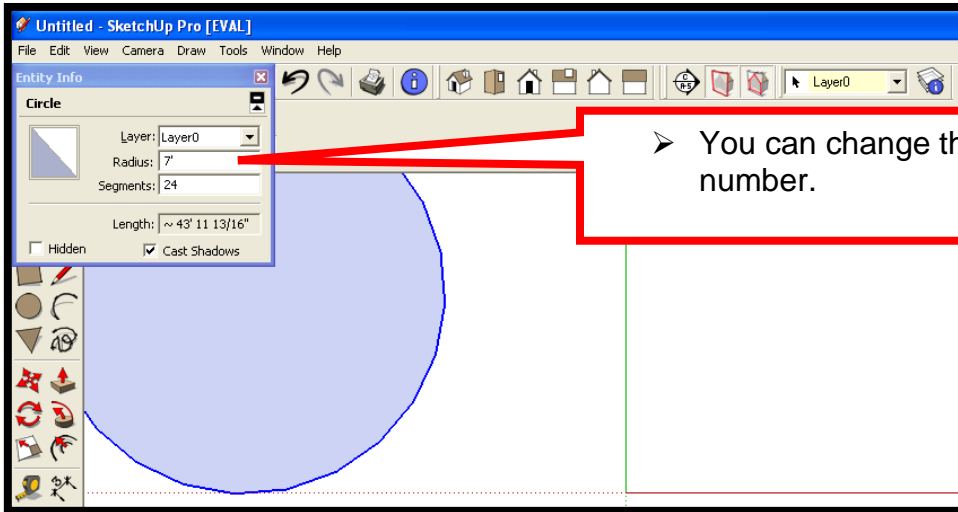
- Select the Circle (Click on the arrow tool or press the spacebar, then click on the circle).
- Right click on just the circle edge.
- Choose Entity Info.



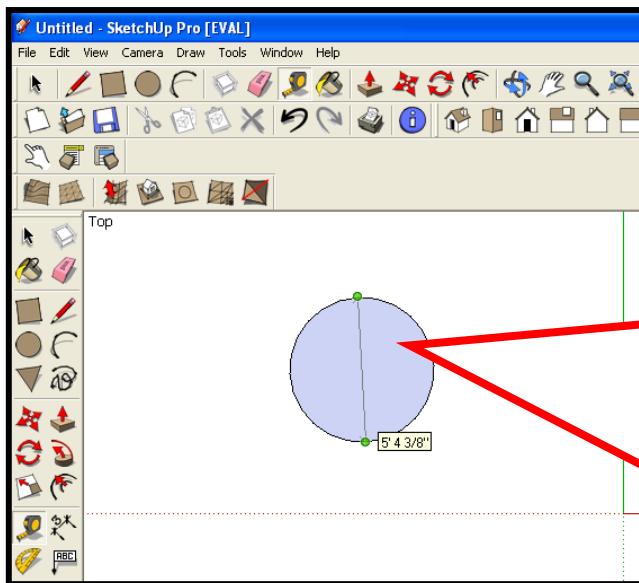
Now you can see the information about your circle.

Notice the Radius is 4'.

The length is 25'



➤ You can change the radius to another number.



To Measure the circumference of your circle (after it's already drawn)

Click on the tape measure tool.



Now click on one end point on the circle. Then drag your mouse and click on the endpoint opposite of the first.

You will see the circumference both on your circle as shown, but also in the window at the bottom of the screen- notice it says length.

- If you want to change the circumference size , select the circle.
- Do a right click on the circle and choose **Entity Info.**
- Type in value that you want.